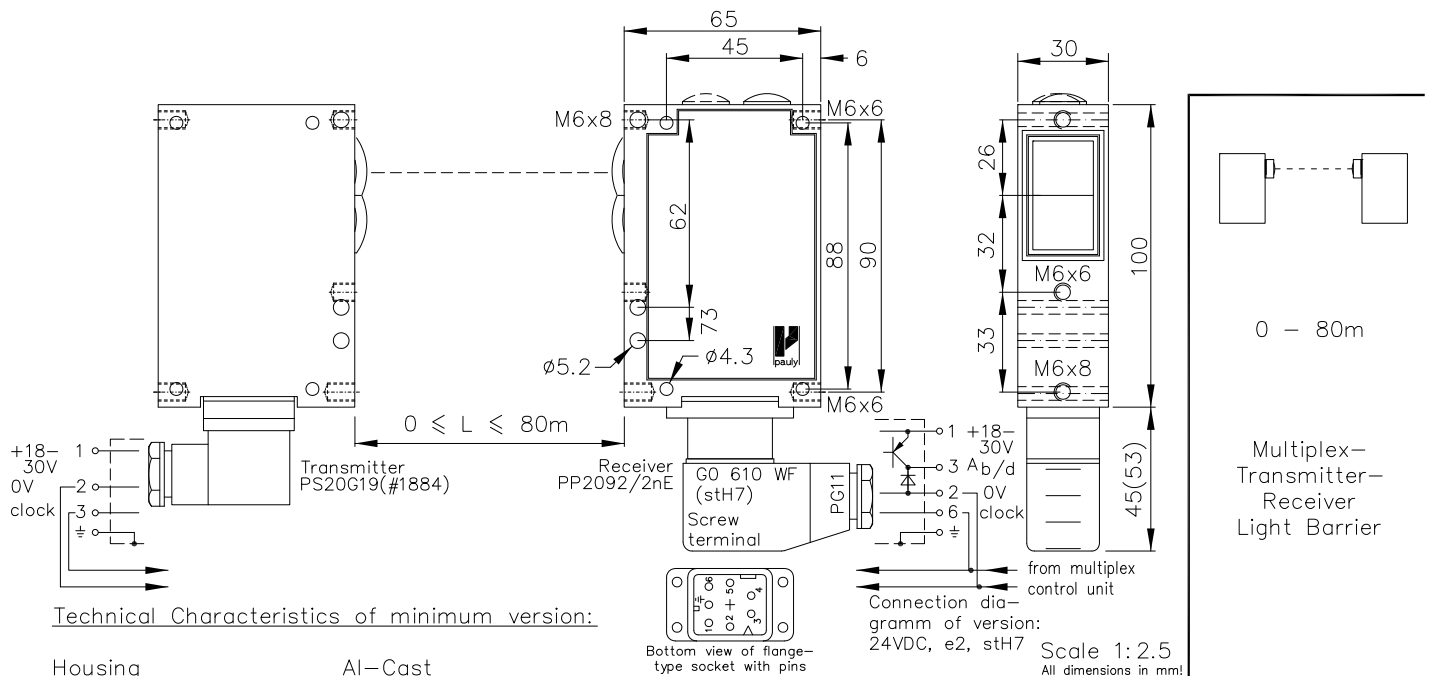


## Multiplex-Transmitter-Receiver Light Barrier Type PP2092/2n



### Technical Characteristics of minimum version:

Housing	Al-Cast
Weight	2x approx. 350g
Protection mode	IP65
Connection	Receiver: 6+1 pin Plug stH4 Transmitter: 3+1 pin Plug stH4
Supply	Receiver: 24VDC/20mA without load Transmitter: 24VDC/50mA
Output	pnp 60mA s.-c.-prot., e2
Signal mode	bright/dark, selectable
Transmitter light	LED 880nm (invisible)
Steady light resistance	>80kLx
Interference suppression	forced synchronisation
Light beam diameter	approx. 2500mm/20m
Access time	<12ms/switching transition
Switching rate	40/s, Relay: 10/s
Switch indicator	LED green (Receiver)
Working indicator	LED red (Transmitter)
Ambient temperature	-30...+80°C (100°C*)

### Features:

Connection	4 pin Plug stLU4 4+1 pin Plug stA5 6+1 pin Plug stA7 6+1 pin Plug stH7 4+1 wire No.-Cable K5 2x3 wire No.-Cable 2K3
Output	nnp 60mA s.-c.-prot., e3 Optocoupler 60V/50mA, e1 Relay 240VAC/5A, 120W/1200VA, 1xCh., R also: 2xe2/2xe3 or antival. e4/e5
Access time	"a": <2ms/switch transition
Switching rate	"q": electr.: 300/s, Relay: 10/s
Time delay	0-10s, switching-on-off-delay, separately adjustable, z10
Level indicator	DIANA, i

\*Exceeding the temperature for a short time does not usually impair functioning

### Accessories:

- Multiplex control device, e.g. PP9031
- Diaphragms
- Optical filters
- Adjustment flange JF19H(1)
- Elbow tube adjustment JR19(2&3)
- Cooling water flange KW19
- Anti heat shield & anti dust tube (K)JT19

### Hints:

Selection of bright/dark switching mode is standard. The selection switch can be reached after removing the blanking screw designated 'PG1'. Bright switching means that the output is operated when the transmitter light is received by the receiver. The switch indicator lights when the output is operated. The on- (Ti) and off- (Ta) delay are optional. Turning the controls behind 'PG2' clockwise increases delay times. The delay time range is between approx. 0 and 10 secs. Other delays are available on request. The level indicator 'DIANA' (Digital ANALog indicator) is optional, too. DIANA shows the level approx. 20 to 25 times above the threshold signal. For proper operation of the light barrier it is not necessary to have all DIANA LEDs on! Connecting the optional available test input to 24V will switch on, nc or 0V will interrupt the transmitter.

The design and make of the devices and their electronics are intellectual property of the company "Fotoelektrik Pauly GmbH & Co. KG". Internal circuit diagrams can, for copyright reasons, not be given therefore. Subject to technical alterations. Errors excepted. The reprinting of this data sheet or the copying of extracts from it are allowed only with the approval of the "Fotoelektrik Pauly GmbH & Co. KG" and with an indication of the sources used. Infringements are punishable by law.

0 - 80m

Multiplex-  
Transmitter-  
Receiver  
Light Barrier

PP2092/2n

Order no.:

1661n

