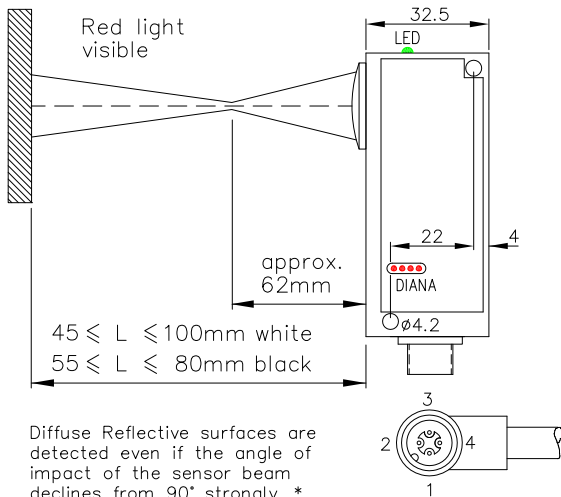
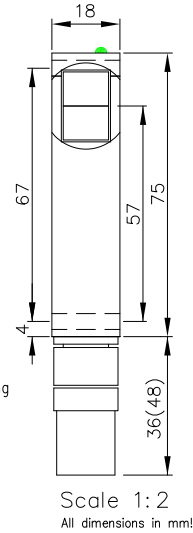
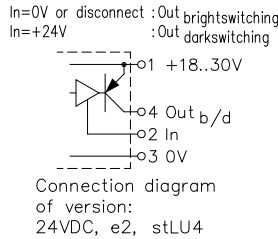


Red-Light Local Range Diffuse-Reflective Sensor Type JP171NT62



Diffuse Reflective surfaces are detected even if the angle of impact of the sensor beam declines from 90° strongly. * Reflective surfaces impair the detecting quality. * Highest indexing precision is reached in L=62mm! L depends on power and surface.




62mm

Local Range
Diffuse-Reflective
Sensor

JP171NT62

Order no.:

1381

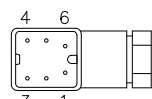
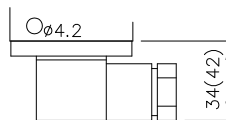
Technical characteristics:

Housing	Al-Cast
Weight	approx. 100g
Protection mode	IP65
Connection	4 pin plug stLU4
Supply	24VDC/40mA without load
Output	pnp 60mA s.c.-prot.,e2
Signal mode	bright-/darkswitching, selectable
Transmitter light	LED 650nm, visble
Steady light resistance	>80kLx
Interference suppress.	force synchronization
Light beam diameter	approx. 80mm/5m
Access time	<12ms/switch transition
Switching rate	40/s
Switch indicator	LED green
Level indicator	4x LED red (DIANA, i)
Ambient temperatur	-25...+60°C

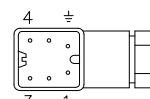
Features:

Connection	6 pin Plug stHI61 5+1 pin Plug stHI62 5 wire no.-Cable K5 (IP67)
Access time	"q" <2ms/switch transition
Switching rate	"q" 300/s

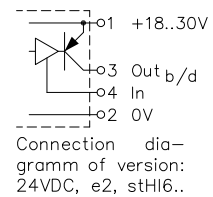
Various Plugs stHI6..:



stHI61(GO60WF)



stHI62(GO51WF)



1381 DE (08.05.14 tb)
 E_1381_1 (27.05.03 gs)
 (18.02.05 mi)

Accessories (optional):

Elbow tube adjustment JR17