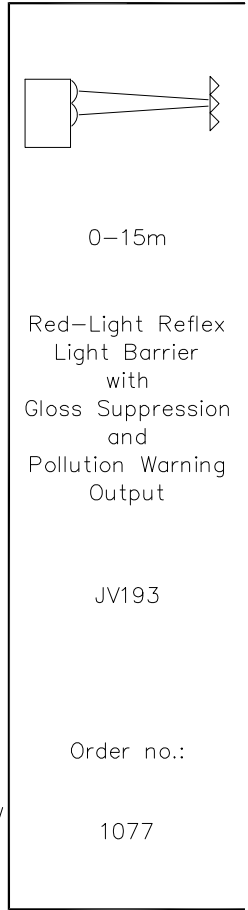
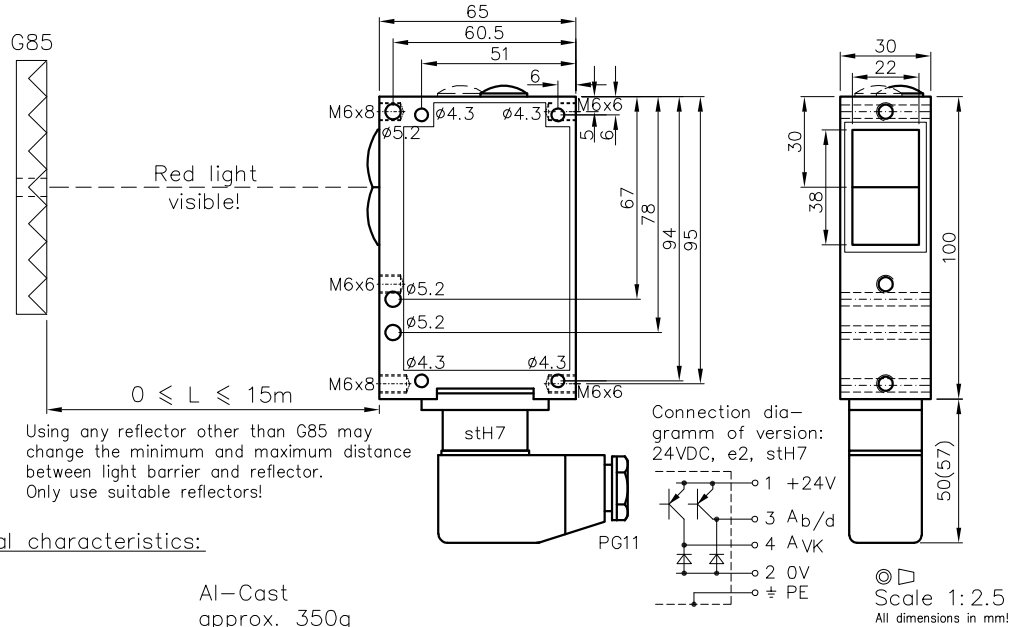


## Red-Light Reflex Light Barrier Type JV193

with Gloss Suppression and Pollution Warning Output



### Technical characteristics:

Housing	Al-Cast
Weight	approx. 350g
Protection mode	IP65
Connection	6+1 pin Plug stH7
Supply	24VDC/60mA without load
Output	2xnpn 60mA s.c.-prot. e2
Signal mode	bright/dark selectable
Transmitter light	LED 650nm
Steady light resistance	>80kLx
Interference suppression	Force synchronization
Gloss suppression	Polarized light
Light beam dia.	approx. 85mm@6m
Access time	<12ms/Switch transition
Switching rate	40/s, Relay: 10/s
Switch indicator	LED's green & red
Ambient temperatur	-30...+80°C

### Features:

Connection	Plug
Output	No.-cable
Access time	Optocoupler 60V/50mA, e1
Switching rate	"a": <2ms/Switch transition
Time delay	"q": 300/s, Relay: 10/s
Level indicator	Switching-on-off-delay, separately adjustable (only AK), z...
	DIANA, i
	If using cooling water flange, then milled wall, y
	Testable by turning off transmitter, ta

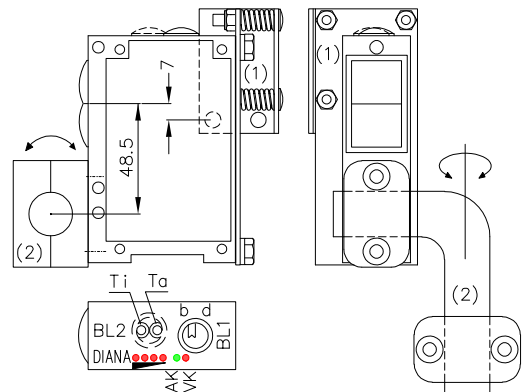
### Accessories:

- Reflector
- Diaphragms, Optical filters
- Adjustment flange JF19H(1)
- Elbow tube adjustment JR19(2)
- Cooling water flange KW19
- Anti heat shield & anti dust tube (K)JT19

### Notes:

- Main contact element (AK):** The bright-dark switch is accessible by removing the blanking screw marked BL11. Switching to bright means that the output circuit of the main contact element is operated when the light emitted from the transmitter reaches the receiver after being reflected by the reflector. The switching indicator - LED (green) - for the main contact element always lights up when the light path is free.
- Pollution Warning Output (VK):** The switching equipment for the Pollution Warning output (red LED) is switched on if the signal level is less than five times of the minimum level of the main contact level (AK, green LED).
- Time delay:** The optional delay time potentiometers located under the BL2 (turn-on (Ti) and turn-off delay (Ta)) for the main contact element (AK) increase by adjusting in a clockwise direction. The adjustable time is between 0s and the end value of the desired time range (1s, 3s or 10s).
- Level indicator:** The level indicator "DIANA" (optional, 4x LED red) indicates approximately 20-fold to 25-fold levels above the response threshold. It is not necessary for all DIANA LEDs to light up in order for the light barrier to function perfectly

### Adjustment assemblies:



1077 DE (18.02.05 mi)  
 E\_1077 1 30.04.21 TBR  
 (16.10.98 tb)  
 (13.01.03 gs)