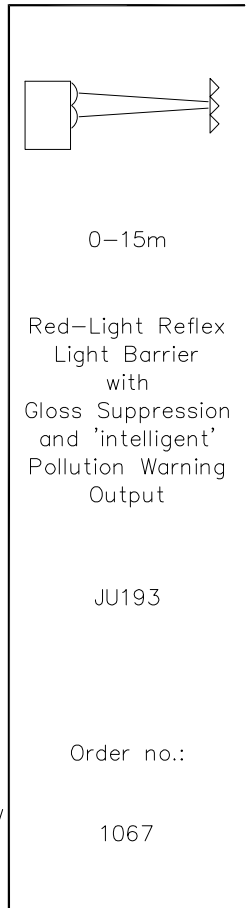
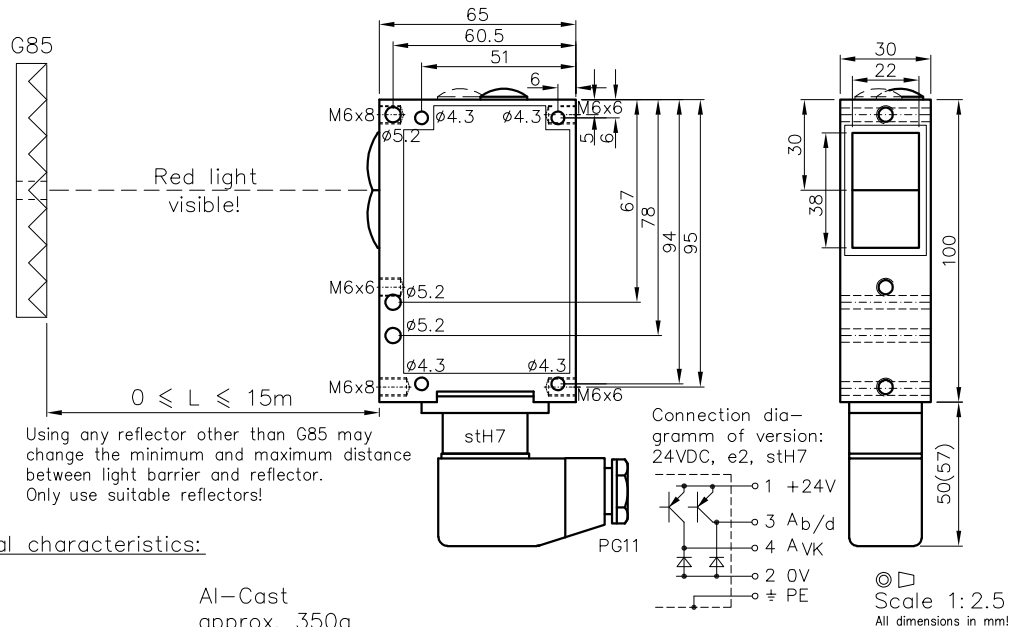


Red-Light Reflex Light Barrier Type JU193

with Gloss Suppression and 'intelligent' Pollution Warning Output



Technical characteristics:

Housing	Al-Cast
Weight	approx. 350g
Protection mode	IP65
Connection	6+1 pin Plug stH7
Supply	24VDC/70mA without load
Output	2xnpn 60mA s.c.-prot. e2
Signal mode	bright/dark selectable
Transmitter light	LED 650nm
Steady light resistance	>80kLx
Interference suppression	Force synchronization
Gloss suppression	Polarized light
Light beam dia.	approx. 85mm@6m
Access time	<12ms/Switch transition
Switching rate	40/s, Relay: 10/s
Switch indicator	LED's green, yellow, red
Ambient temperatur	-30...+80°C

Features:

Connection	Plug
Output	No.-cable
Access time	Optocoupler 60V/50mA, e1
Switching rate	"a": <2ms/Switch transition
Time delay	"q": 300/s, Relay: 10/s
Level indicator	Switching-on-off-delay, separately adjustable (only AK), z...
Testable by turning off transmitter, ta	DIANA, i
	If using cooling water flange, then milled wall, y

Accessories:

- Reflector
- Diaphragms, Optical filters
- Adjustment flange JF19H(1)
- Elbow tube adjustment JR19(2)
- Cooling water flange KW19
- Anti heat shield & anti dust tube (K)JT19

Notes:

Main contact element (AK): The bright-dark switch is accessible by removing the blanking screw marked BL11. Switching to bright means that the output circuit of the main contact element is operated when the light emitted from the transmitter reaches the receiver after being reflected by the reflector. The switching indicator - LED (green) - for the main contact element always lights up when the light path is free.

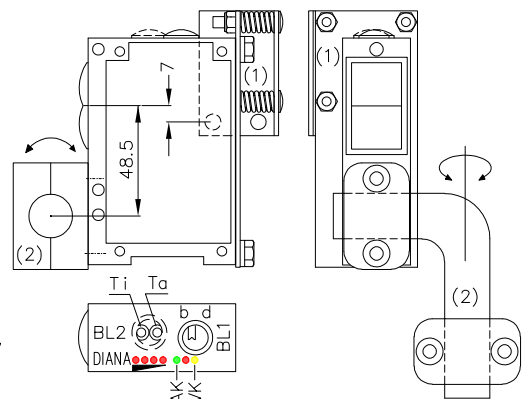
Pollution Warning Output (VK): The switching equipment for the Pollution Warning Output (yellow LED) is switched if, subsequent to an interruption in light beam (red LED on) and the light path being free again (AK, green LED on), dirt or clogging causes the signal level to be under five times the minimum level (red and green LED on) and the light beam is then interrupted again. At this point in time, the light barrier is still fully functional. As soon as dirt has been removed (green LED on, red LED off), the dirt indicator (yellow LED) switches off.

Time delay: The optional delay time potentiometers located under the BL2 (turn-on (Ti) and turn-off delay (Ta)) for the main contact element (AK) increase by adjusting in a clockwise direction. The adjustable time is between 0s and the end value of the desired time range (1s, 3s or 10s).

Level indicator: The level indicator "DIANA" (optional, 4x LED red) indicates approximately 20-fold to 25-fold levels above the response threshold. It is not necessary for all DIANA LEDs to light up in order for the light barrier to function perfectly

The design and make of the devices and their electronics are intellectual property of the company "Fotoelektrik Pauly GmbH". Internal circuit diagrams can, for copyright reasons, not be given therefore. Subject to technical alterations. Errors excepted. The reprinting of this data sheet or the copying of extracts from it are allowed only with the approval of the "Fotoelektrik Pauly GmbH" and with an indication of the sources used. Infringements are punishable by law.

Adjustment assemblies:



1067 DE (18.02.05 mi)
 E_1067 1 (19.09.05 tb)
 (16.10.98 tb) 30.04.21 TBR
 (13.01.03 gs)